

Timpani in D/A



5



20



25 2. Vite



34



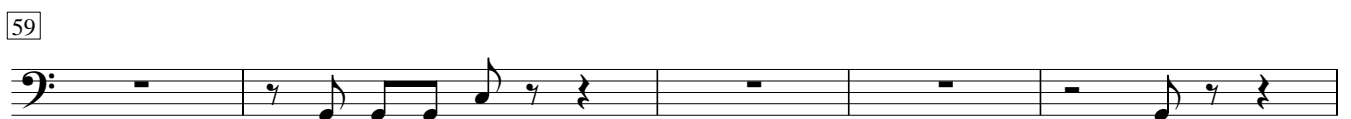
39




43



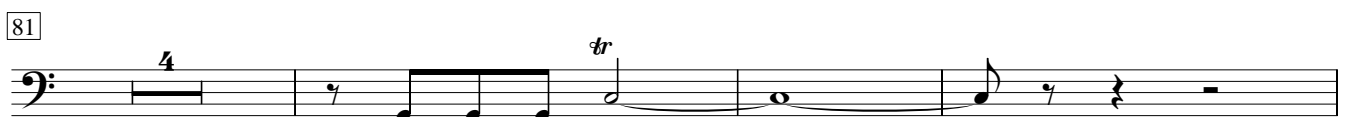
59



64



81



88



92

Timpani in D/A

95

101

104

107

110

119

121

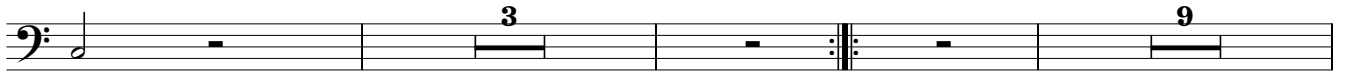
Nummer 2 für Timpani tacet

Gavotte 1

Timpani in D/A



6



21



28


Gavotte 2 tacet



Gavotte 1 da capo

Bourrée

Timpani in D/A



7



13



23



26



Gigue

Timpani in D/A



5



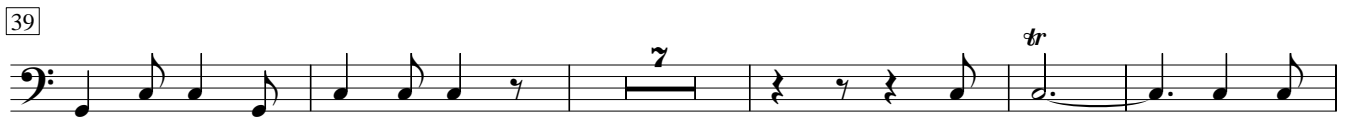
25



32



39



51



66

